

Philips  
LCD monitor with USB-C

## B Line

24 (23.8" / 60.5 cm diag.)  
Full HD (1920 x 1080)

243B1



# Simplify your connections

with USB-C docking monitor

The Philips USB-C monitor replaces cable clutter. View FHD image and re-charge a laptop, all at the same time with a single USB-C cable. Features like Daisy chain for multi-display setup, Flicker-free and LowBlue make work easy-on-the eyes.

### Single cable USB-C connection

- Connect your notebook with one USB-C cable
- Power and re-charge compatible notebook from the monitor
- USB 3.2 high speed data transfer

### Designed for the way you work

- Less eye fatigue with Flicker-free technology
- LowBlue Mode for easy on-the-eyes productivity
- HDMI ensures universal digital connectivity
- DisplayPort connection for maximum visuals
- SmartErgoBase enables people-friendly ergonomic adjustments
- Built-in stereo speakers for multimedia

### Designed for sustainability

- Designed to meet environmental standards
- PowerSensor saves up to 80% energy costs
- LightSensor for the perfect brightness with minimal power

# PHILIPS

# Highlights

## USB-C connection



This Philips display features a USB type-C connector with power delivery. With intelligent and flexible power management, you can power charge your compatible laptop directly. Its slim, reversible USB-C allows for easy, one-cable connection. You can watch high resolution video and transfer data at a super-speed, while powering up and re-charging your notebook at the same time.

## Power & re-charge notebook

This monitor features a built in USB-C connector which meets USB Power Delivery standard. With intelligent and flexible power management, you can now power up and or re-charge your compatible\* Notebook directly from the Monitor using a single USB-C cable.

## Flicker-free technology



Due to the way brightness is controlled on LED-backlit screens, some users experience flicker on their screen which causes eye fatigue. Philips Flicker-free Technology applies a new solution to regulate brightness and reduce flicker for more comfortable viewing.

## LowBlue Mode



Studies have shown that just as ultra-violet rays can cause eye damage, shortwave length blue light rays from LED displays can cause eye damage and affect vision over time. Developed for wellbeing, Philips LowBlue Mode setting uses a smart software technology to reduce harmful shortwave blue light.

## HDMI Ready



An HDMI-ready device has all the required hardware to accept High-Definition Multimedia Interface (HDMI) input. A HDMI cable enables high-quality digital video and audio all transmitted over a single cable from a PC or any number of AV sources (including set-top boxes, DVD players, A/V receivers and video cameras).

## SmartErgoBase



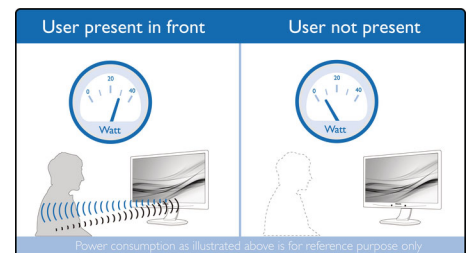
The SmartErgoBase is a monitor base that delivers ergonomic display comfort and provides cable management. The base's people-friendly height, swivel, tilt and rotation angle adjustments position the monitor for

maximum comfort that can ease the physical strains of a long workday; cable management reduces cable clutter and keeps the workspace neat and professional.

## Built-in stereo speakers

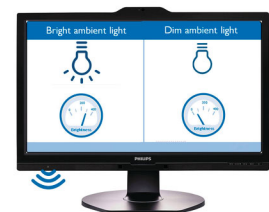
A pair of high quality stereo speakers built into a display device. It can be visible front firing, or invisible down firing, top firing, rear firing, etc depending on model and design.

## PowerSensor



PowerSensor is a built-in 'people sensor' that transmits and receives harmless infrared signals to determine if user is present and automatically reduces monitor brightness when user steps away from the desk, cutting energy costs by up to 80 percent and prolonging monitor life

## LightSensor



LightSensor uses a smart sensor to adjust the picture brightness depending on the room light conditions for the perfect picture with minimal power usage.

## Designed for sustainability

Designed for sustainability, and reduced operating costs, this monitor meets environmental standards. Such as: ENERGY STAR, EPEAT, TCO Certified. For more information on certification, please visit: ENERGY STAR: <https://www.energystar.gov/> EPEAT: <https://www.epeat.net/> TCO Certified: <https://tcocertified.com/>



USB-C Docking



Flicker-free



LowBlue Mode



EasyRead



Ultra Narrow Bezel



SmartErgo Base



HDMI



Built-in Speaker



PowerSensor

# Specifications

## Picture/Display

- LCD panel type: IPS technology
- Backlight type: W-LED system
- Panel Size: 23.8 inch / 60.5 cm
- Display Screen Coating: Anti-Glare, 3H, Haze 25%
- Effective viewing area: 527.04 (H) x 296.46 (V)
- Aspect ratio: 16:9
- Maximum resolution: 1920 x 1080 @ 75 Hz\*
- Pixel Density: 93 PPI
- Response time (typical): 4 ms (Gray to Gray)\*
- Brightness: 250 cd/m<sup>2</sup>
- Contrast ratio (typical): 1000:1
- SmartContrast: 50,000,000:1
- Pixel pitch: 0.2745 x 0.2745 mm
- Viewing angle: 178° (H) / 178° (V), @ C/R > 10
- Flicker-free
- Picture enhancement: SmartImage
- Color gamut (typical): NTSC 91%\*, sRGB 107%\*
- Display colors: 16.7M
- Scanning Frequency: 30 - 85 kHz (H) / 48 - 75 Hz (V)
- sRGB
- EasyRead
- LowBlue Mode
- Adaptive sync

## Connectivity

- Signal Input: DisplayPort 1.2 x 1, HDMI 1.4 x 1, USB-C 3.2 Gen 2 x 1 (upstream, power delivery up to 65 W)
- HDCP: HDCP 1.4 (HDMI/DP/USB-C)
- Signal Output: DisplayPort out\* (DP / USB-C)
- USB:: USB 3.2 Gen 2 x 1 (upstream), USB 3.2 x 4 (downstream with 1 fast charge B.C 1.2)
- Audio (In/Out): PC audio-in, Headphone out
- RJ45: Ethernet LAN up to 1G\*
- Sync Input: Separate Sync

## USB docking

- USB-C: Reversible plug connector
- Super speed: Data and Video transfer
- DP: Built-in Display Port Alt mode
- USB-C power delivery: USB PD version 3.0
- USB-C max. power delivery: Up to 65 W (5V/3A; 9V/3A; 10V/3A; 12V/3A; 15V/3A; 20V/3.25A)

## Convenience

- Built-in Speakers: 2 W x 2
- User convenience: SmartImage, Input, PowerSensor, Menu, Power On/Off
- Control software: SmartControl
- OSD Languages: Brazil Portuguese, Czech, Dutch, English, Finnish, French, German, Greek, Hungarian, Italian, Japanese, Korean, Polish, Portuguese, Russian, Simplified Chinese, Spanish, Swedish, Traditional Chinese, Turkish, Ukrainian
- Other convenience: Kensington lock, VESA mount (100x100mm)
- Plug & Play Compatibility: DDC/CI, Mac OS X, sRGB, Windows 10 / 8.1 / 8 / 7

## Stand

- Height adjustment: 150 mm
- Pivot: -/+ 90 degree
- Swivel: -/+ 180 degree
- Tilt: -5 ~ 35 degree

## Power

- ECO mode: 16.4 W (typ.)
- On mode: 15.2 W (typ.) (EnergyStar 8.0 test method)
- Standby mode: < 0.5 W (typ.)
- Off mode: Zero watts with Zero switch
- Energy Label Class: A
- Power LED indicator: Operation - White, Standby mode- White (blinking)
- Power supply: Built-in, 100-240VAC, 50-60Hz

## Dimensions

- Product with stand(max height): 540 x 501 x 205 mm
- Product without stand (mm): 540 x 323 x 51 mm
- Packaging in mm (WxHxD): 600 x 465 x 198 mm

## Weight

- Product with stand (kg): 4.98 kg
- Product without stand (kg): 3.40 kg
- Product with packaging (kg): 7.04 kg

## Operating conditions

- Temperature range (operation): 0°C to 40°C °C
- Temperature range (storage): -20°C to 60°C °C
- Relative humidity: 20%-80 %
- Altitude: Operation: +12,000ft (3,658m), Non-operation: +40,000ft (12,192m)
- MTBF (demonstrated): 70,000 hrs (excluded backlight)

## Sustainability

- Environmental and energy: PowerSensor, LightSensor, EnergyStar 8.0, EPEAT\*, RoHS, TCO Certified Edge, WEEE
- Recyclable packaging material: 100 %
- Post consumer recycled plastic: 85%
- Specific Substances: PVC / BFR free housing, Mercury free, Lead free

## Compliance and standards

- Regulatory Approvals: CE Mark, FCC Class B, SEMKO, CU-EAC, TUV/GS, TUV Ergo, EPA, UKRAINIAN, ICES-003, CB

## Cabinet

- Front bezel: Black
- Rear cover: Black
- Foot: Black
- Finish: Texture

## What's in the box?

- Monitor with stand
- Cables: HDMI cable, DP cable, USB-C/A Y cable, Power cable
- User Documentation



Issue date 2019-12-24

Version: 2.0.1

12 NC: 8670 001 64117  
EAN: 87 12581 76327 5

© 2019 Koninklijke Philips N.V.  
All Rights reserved.

Specifications are subject to change without notice.  
Trademarks are the property of Koninklijke Philips N.V. or their respective owners.

[www.philips.com](http://www.philips.com)

\* "IPS" word mark / trademark and related patents on technologies belong to their respective owners.

\* The maximum resolution works for either HDMI, DP or USB-C input.

\* Response time value equal to SmartResponse

\* NTSC Area based on CIE1976

\* sRGB Area based on CIE 1931

\* DisplayPort out works only under either DP in or USB-C in.

\* Maximum number of external displays that can be supported: 1 by using USB-C, 3 by using DP

\* If your Ethernet connection seems slow, please enter OSD menu and select USB 3.0 or higher version which can support the LAN speed to 1G.

\* Activities such as screen sharing, on-line streaming video and audio over the Internet can impact your network performance. Your hardware, network bandwidth and its performance will determine overall audio and video quality.

\* For USB-C power and charging function, your Notebook/device must support USB-C standard Power Delivery specifications. Please check with your Notebook user manual or manufacturer for more details.

\* For Video transmission via USB-C, your Notebook/device must support USB-C DP Alt mode

\* EPEAT rating is valid only where Philips registers the product. Please visit <https://www.epeat.net/> for registration status in your country.

\* The monitor may look different from feature images.